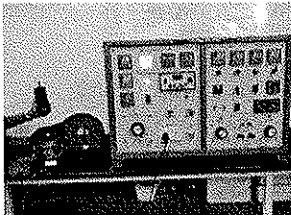


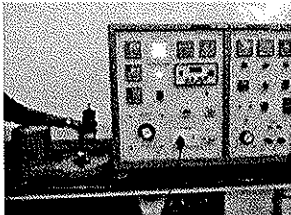
TEST REPORT

Product:	Tabletop Grinder	Location:	DQ lab
Model:	Vision	Report No:	06/2024-07
Part Description	Full Packaging unit	Date:	17 Jul 2024
No of Sample:	1 No	Rated Watts:	150W
Reason for test:	Modified Model Sample T2 Validation Purpose.		

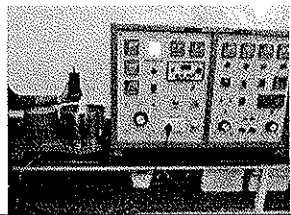
Motor Details

S. No	Motor			Test Image
	Amps	Watts	RPM	
1	0.61A	143W	1450	

No Load Data

S. No	Without Drum			Test Image
	Amps	Watts	RPM	
1	0.64A	147W	150	

Load Data

S. No	With Drum			Test Image
	Amps	Watts	RPM	
1	0.67A	156W	148	

PERFORMANCE TEST

DFU quantities & customer abuse quantities of Rice are tested for 1 cycle at rated voltage without any abnormality.

Pass Criteria: No trip & abnormality observed, and Max allowable rated time limit is 60 minutes of each recipe.

Sample - A				
Tough Ingredient Performance	Dhall-200g	Rice – 1Kg	Dhall-250g	Rice – 1250g
Average Watts in W	162W	178W	170W	193W
Average Amps in A	0.70A	0.73A	0.78A	0.86A
Test cycles	2	2	2	2
Operating time in seconds	20min	20min	20min	20min
TOP trip Status	No trip	No trip	No trip	No trip
(Dall-710-micron & Rice-500-micron) Sieve / Residue	5g	3g	6g	8g
Performance level	OK	OK	OK	OK

TEST REPORT

Product:	Tabletop Grinder	Location:	DQ lab
Model:	Vision	Report No:	06/2024-07
Part Description	Full Packaging unit	Date:	17 Jul 2024
No of Sample:	1 No	Rated Watts:	150W
Reason for test:	Modified Model Sample T2 Validation Purpose.		

TEMPERATURE RISE

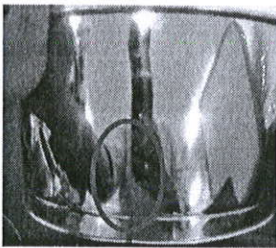
TEST:

1 cycle = 60 min ON, (Based on saturation of motor coil temperature) tested @ 230 of Rated voltage.

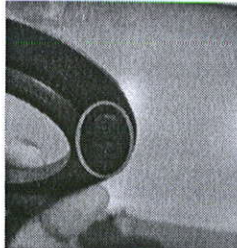
Test Voltage: 230V

Cycle Timing:60 Min on and Maintained 200W	230V
Average watts in W	195W to 210W
Average Amps in A	0.79A to 0.83A
Average RPM	148
Temp rise at Enclosure temp in °C	48
Temp rise at Plug & chord temp in °C	32
Temp rise at Top Casting temp in °C	96
Temp rise at Top Winding temp in °C	97
Temp rise at Stator Core temp in °C	98
Temp rise at Bottom Casting temp in °C	106
Temp rise at Bottom Winding temp in °C	96
Room temp in °C	30
Result	Ok

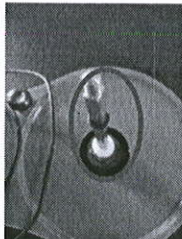
Observation:



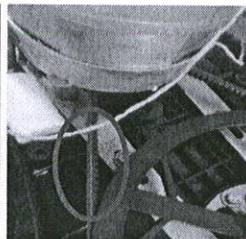
Drum Weld Mark



Flash



Washer gap



Belt Wear@2 HRS

<p>S. SURESH Tested By:</p>	<p><i>[Signature]</i> 17/07/24 Verified By:</p>	<p><i>[Signature]</i> 18/7/24 Approved By:</p>
--	---	--