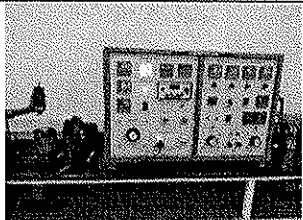


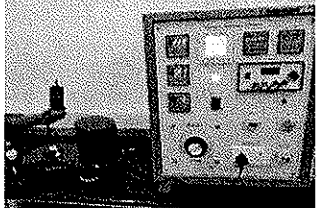
## TEST REPORT

<b>Product:</b>	Tabletop Grinder	<b>Location:</b>	DQ lab
<b>Model:</b>	Topaz	<b>Report No:</b>	06/2024-07
<b>Part Description</b>	Full Packaging unit	<b>Date:</b>	17 Jul 2024
<b>No of Sample:</b>	1 No	<b>Rated Watts:</b>	150W
<b>Reason for test:</b>	Modified Model Sample T2 Validation Purpose.		

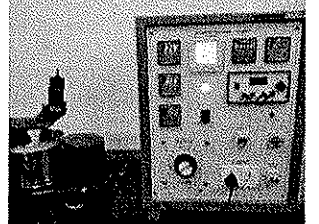
### Motor Details

S. No	Motor			Test Image
	Amps	Watts	RPM	
1	0.61A	147W	1472	

### No Load Data

S. No	Without Drum			Test Image
	Amps	Watts	RPM	
1	0.65A	147W	145	

### Load Data

S. No	With Drum			Test Image
	Amps	Watts	RPM	
1	0.68A	158W	144	

## **PERFORMANCE TEST**

*DFU quantities & customer abuse quantities of Rice are tested for 1 cycle at rated voltage without any abnormality.*

**Pass Criteria:** No trip & abnormality observed, and Max allowable rated time limit is 60 minutes of each recipe.

Sample - A				
Tough Ingredient Performance	Dhall-200g	Rice – 1Kg	Dhall-250g	Rice – 1250g
Average Watts in W	161W	178W	170W	193W
Average Amps in A	0.70A	0.73A	0.78A	0.86A
Test cycles	2	2	2	2
Operating time in seconds	20min	20min	20min	20min
TOP trip Status	No	No	No	No
(Dall-710-micron & Rice-500-micron) Sieve / Residue	6g	8g	8g	9g
Performance level	OK	OK	OK	OK

**TEST REPORT**

<b>Product:</b>	<b>Tabletop Grinder</b>	<b>Location:</b>	<b>DQ lab</b>
<b>Model:</b>	<b>Topaz</b>	<b>Report No:</b>	<b>06/2024-07</b>
<b>Part Description</b>	<b>Full Packaging unit</b>	<b>Date:</b>	<b>17 Jul 2024</b>
<b>No of Sample:</b>	<b>1 No</b>	<b>Rated Watts:</b>	<b>150W</b>
<b>Reason for test:</b>	<b>Modified Model Sample T2 Validation Purpose.</b>		

**TEMPERATURE RISE**

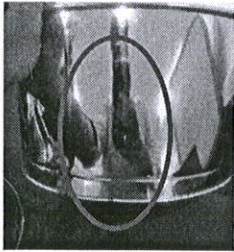
**TEST:**

1 cycle = 60 min ON, (Based on saturation of motor coil temperature) tested @ 230 of Rated voltage.

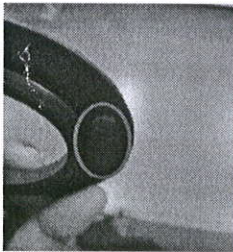
**Test Voltage : 230V**

<b>Cycle Timing:60 Min on and Maintained 200W</b>	<b>230V</b>
Average watts in W	195W to 210W
Average Amps in A	0.79A to 0.83A
Average RPM	144
Temp rise at Enclosure temp in °C	49
Temp rise at Plug & chord temp in °C	32
Temp rise at Top Casting temp in °C	97
Temp rise at Top Winding temp in °C	95
Temp rise at Stator Core temp in °C	97
Temp rise at Bottom Casting temp in °C	106
Temp rise at Bottom Winding temp in °C	98
Room temp in °C	30
Result	Ok

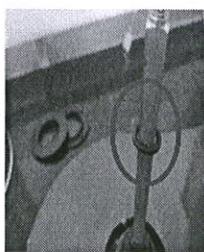
**Observation:**



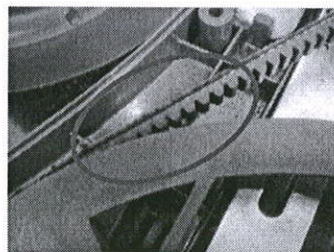
Drum Weld Mark



Flash



Washer gap



Belt Wear@2 HRS

<p><i>S. SORESH</i> <b>Tested By:</b></p>	<p><i>S. S.</i> 18/07/24 <b>Verified By:</b></p>	<p><i>S. S.</i> 18/7/24 <b>Approved By:</b></p>
---	--	---