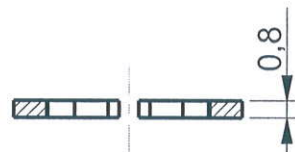
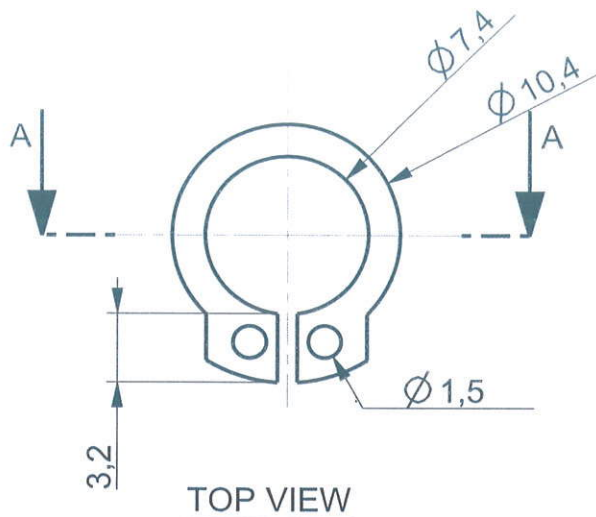


1

2

3

| | |
|--------------|-----|
| PART NO | REV |
| FS-CI0137-AA | AA |



| |
|--------------|
| MATING PARTS |
| MOTOR SHAFT |
| |
| |
| |
| |
| |

TECHNICAL SPEC:

- 1) FOR SHAFT SIZE=8mm
- 2) HARDNESS-60 HRC

NOTES

1. ALL DIMENSIONS ARE IN MM.
2. PART SHOULD BE FREE FROM BURRS & SHARP EDGES.
3. DO NOT MEASURE FROM THE DRAWING.

| | | | | | |
|-----|-----------------------|-----|-------|------|--------|
| AA | DRAWING RELEASE | -- | ANAND | -- | 5-9-23 |
| REV | DESCRIPTION OF CHANGE | LOC | BY | E.N. | DATE |

| | | | | | | | | | | |
|------------------------------------|--------|----------------------------------|----------------|------------------|--------------------|---|----------|--------------|--------|----------|
| ALL DIMENSIONS ARE IN MM | | GENERAL TOLERANCES | | | | ALL RIGHTS RESERVED MAYA APPLIANCES (P) LTD, CHENNAI-97, INDIA. | | | | |
| DIMENSIONS | | $\frac{0.5}{6}$ | $\frac{6}{30}$ | $\frac{30}{120}$ | $\frac{120}{400}$ | $\frac{400}{1000}$ | MATERIAL | SPRING STEEL | GRADE | -- |
| TOLERANCES \pm | | 0.1 | 0.2 | 0.3 | 0.4 | 0.8 | COLOUR | BLACK | FINISH | HARDENED |
| ANGULAR TOLERANCE- $\pm 1/2^\circ$ | | CONCENTRICITY- $\varnothing 0.1$ | | | | PART NO : FS-CI0137-AA | | REV | A | |
| REFERENCE | -- | * CRITICAL DIMENSIONS. | | | | DRAWN BY | DATE | 5-9-23 | | |
| ASSEMBLY | COMMON | DENSITY (g/mm ³) | -- | CHECKED BY | <i>A. S. B.</i> | DATE | 28-12-23 | | | |
| MODEL | -- | MASS (kg) | -- | APPD BY | <i>(Signature)</i> | DATE | 19/1/24 | | | |
| DO NOT MEASURE FROM DRAWING | | THIRD ANGLE PROJECTION | | | | SHEET SIZE | | SHEET OF | | |
| SCALE | 3.000 | TITLE | | | | CIRCLIP NO-8 | | A4 | | 1 OF 1 |

1

2

3